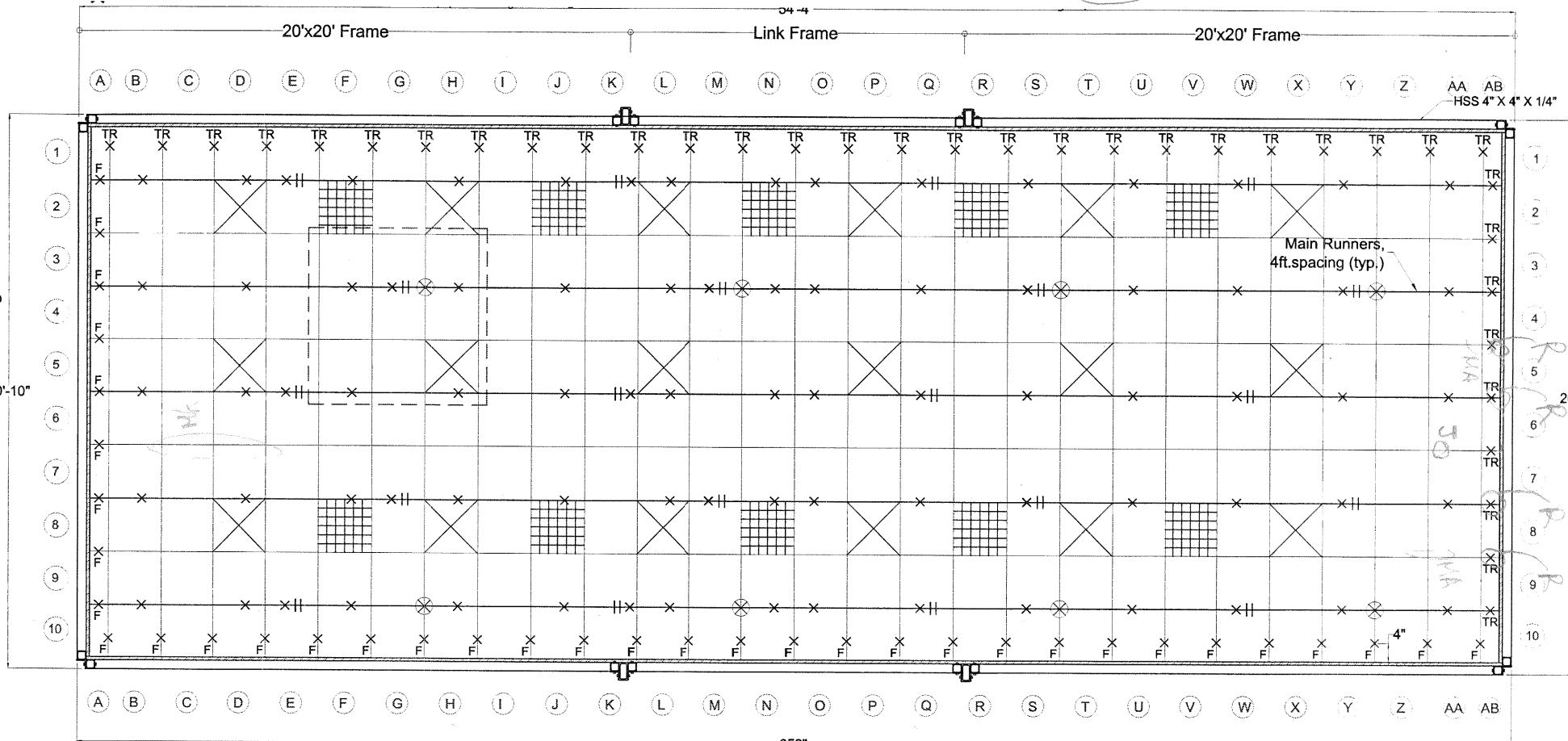


9/27/2011

Seismic Qualification Test Protocol (#4)										
Test No.	Target S <sub>s</sub> (g)	Test Direct.	Test Description	Test Date	PGA <sub>H</sub> (g)	PGA <sub>V</sub> (g)	FA <sub>H</sub> (g)	FA <sub>V</sub> (g)	Remarks	
TEST #4. Tri-axial Input: Ceiling Weight/Size: 1.0 lbs/2"x2", Bracing/Comp.Strut: Yes/Yes, P.Angle Type: 2", Condition: SDC D										
144	NS 1108	M --	--	9/26/2011	--	--	--	--	Take pictures	
145	NS 1108	M --	--		--	--	--	--	Take pictures	
146	NS 1108	M whn	3D		--	--	--	--	AC156-Random Frequency Search - 3D	
147	NS 1108	M 50	EW		0.13	0.09	0.21	0.09	UnCompensated motion	
148	NS 1108	M 50b	EW, Vert		0.13	0.09	0.21	0.09	UnCompensated motion	
149	NS 1108	M 50c	3D		0.13	0.09	0.21	0.09	UnCompensated motion	
150	NS 1108	M --	--		--	--	--	--	Take pictures & mark any damage	
151	NS 1108	M --	--		--	--	--	--	Generate Compensated Motions @ Roof Center	
152	NS 1108	M 50d	EW		0.13	0.09	0.21	0.09	Compensated motion @ Roof Center +3 Acc.	
153	NS 1108	M 50e	EW, Vert		0.13	0.09	0.21	0.09	Compensated motion @ Roof Center	
154	NS 1108	M 50f	3D		0.13	0.09	0.21	0.09	Compensated motion @ Roof Center	
155	NS 1108	M --	--		--	--	--	--	Check the response of compensation & Force and Acc.	
156	NS 1108	M 75	3D		0.20	0.13	0.32	0.13	Compensated motion / Destructive testing	
157	NS 1108	M 100	3D		0.27	0.18	0.43	0.18	Compensated motion	
158	NS 1108	M --	--		--	--	--	--	Take pictures & mark any damage No Damage.	
159	NS 1108	M 125	3D		0.33	0.22	0.53	0.22	Compensated motion	
160	NS 1108	M --	--		--	--	--	--	Take pictures & mark any damage No Damage	
161	NS 1108	M 150	3D		0.40	0.27	0.64	0.27	Compensated motion	
162	NS 1108	M --	--		--	--	--	--	Inspection (4R, 1J)	
163	NS 1108	M 175	3D		0.47	0.31	0.75	0.31	Compensated motion	
164	NS 1108	M --	--		--	--	--	--	Take pictures & mark any damage (4R, 4J)	
165	NS 1108	M 200	3D		0.53	0.36	0.85	0.36	Compensated motion	
166	NS 1108	M --	--		--	--	--	--	Inspection	
167	NS 1108	M 225	3D		0.60	0.40	0.96	0.40	Compensated motion	
168	NS 1108	M --	--		--	--	--	--	Take pictures & mark any damage TEST ENDED	
169	NS 1108	M 250	3D		0.67	0.44	1.07	0.44	Compensated motion	
170	NS 1108	M --	--		--	--	--	--	Take pictures & mark any damage	
171	NS 1108	M 275	3D		0.73	0.49	1.17	0.49	Compensated motion	
172	NS 1108	M --	--		--	--	--	--	Take pictures & mark any damage	
173	NS 1108	M 300	3D		0.80	0.53	1.28	0.53	Compensated motion	
174	NS 1108	M --	--		--	--	--	--	Take pictures & mark any damage	

*No Damage @100*  
*No Damage @125*  
*4 Rivets, 1 Tee Joint @150*

Test Protocol #: NS1108 M150	Sheet #: 1/4
DATE / Time: 3:30PM 3:45PM	



Free Side Unattached (West & South Sides)

- (a) Use 2"x2" angle with 3/8" gap (all expect (b))
- (b) Use 3/8" with clip #5, #8, #10

Suspended ceiling system layout (20'-10" x 54'-4")

PRODUCED BY AN AUTODESK EDUCATIONAL PRODUCT



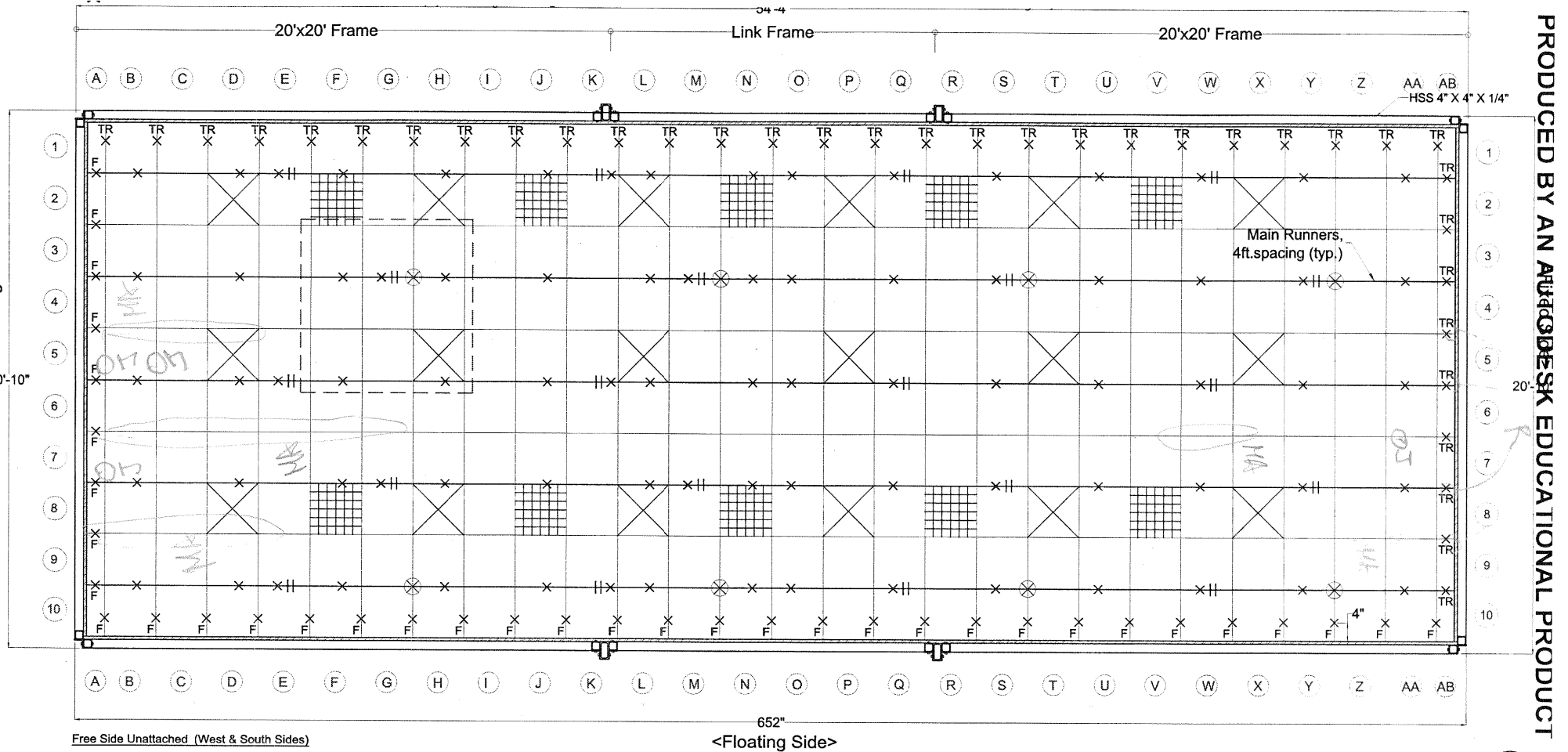
PROJECT: Suspended Components Test Prep.	CONTENT: Ceiling System (20' x 50')	DWG. NO
BY:	DATE: 09/21/2011	REV. NO.

Inspe

SCALE:

@175. 4 Rivets, Tee Joints

Test Protocol #: NS1108	Sheet #: 2/4
DATE / Time: 3:50 PM	



- Free Side Unattached (West & South Sides)
- (a) Use 2"x2" angle with 3/8" gap (all expect (b))
  - (b) Use 3/8" with clip #5, #8, #10

Suspended ceiling system layout (20'-10" x 54'-4")

PROJECT: Suspended Components Test Prep.	CONTENT: Ceiling System (20' x 50')	DWG. NO
BY:	DATE: 09/21/2011	REV. NO.



PRODUCED BY AN AUTODESK EDUCATIONAL PRODUCT

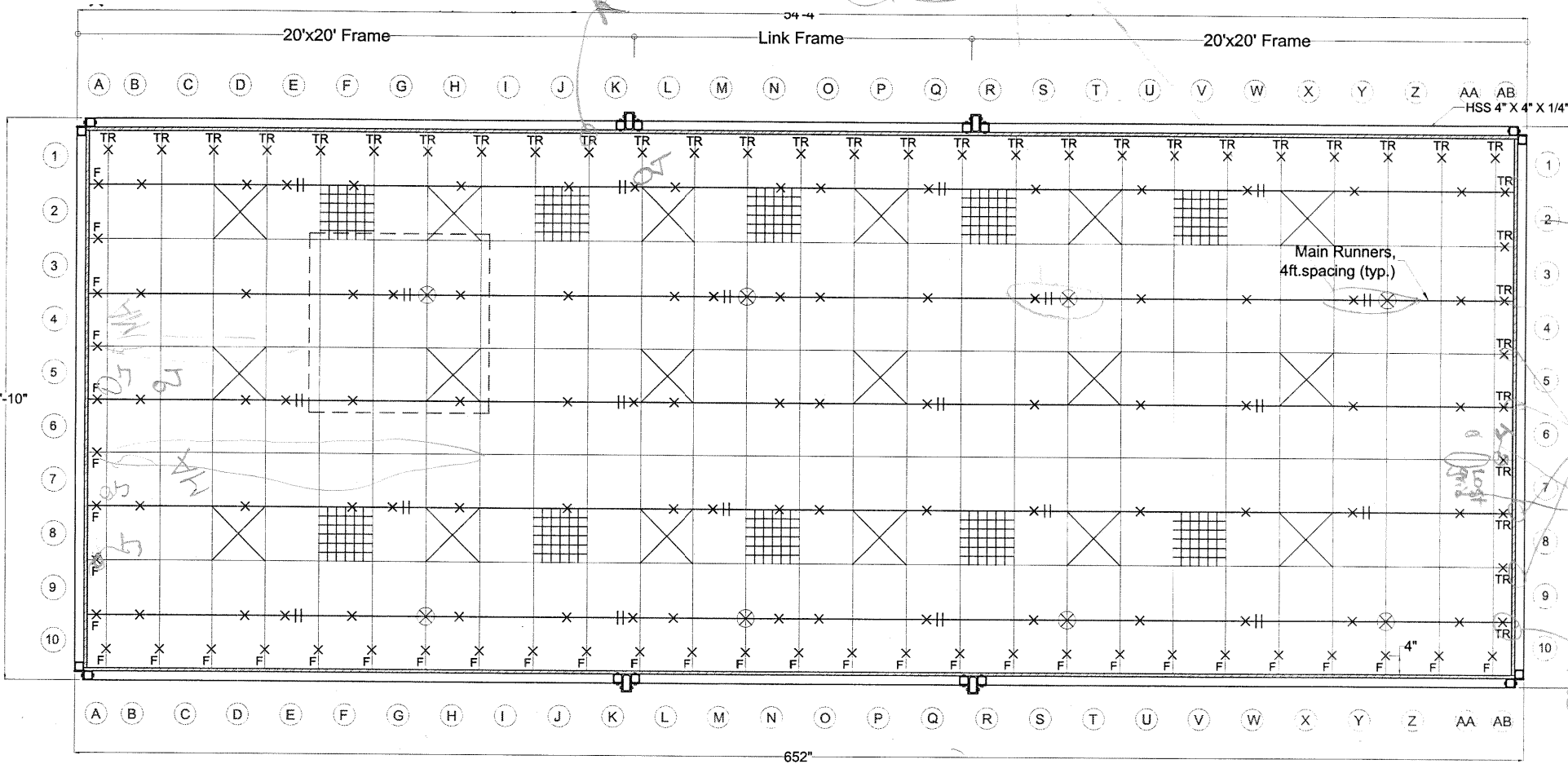
PRODUCED BY AN AUTODESK EDUCATIONAL PRODUCT

@200  
5 Rivets, 1 Fallen Tee, 6J, 2 Dislodged Tiles, MREWB4

got loaded

Main runner w/comp. post got twisted due to lateral force

Test Protocol # NS1108 M200	Sheet #: 3/4
DATE / Time: 4:03PM	



Free Side Unattached (West & South Sides)

<Floating Side>

- (a) Use 2"x2" angle with 3/8" gap (all expect (b))
- (b) Use 3/8" with clip #5, #8, #10

Suspended ceiling system layout (20'-10" x 54'-4")

PRODUCED BY AN AUTODESK EDUCATIONAL PRODUCT



PROJECT: Suspended Components Test Prep.	CONTENT: Ceiling System (20' x 50')	DWG. NO.
BY:	DATE: 09/21/2011	REV. NO.

Inspector

SCALE:

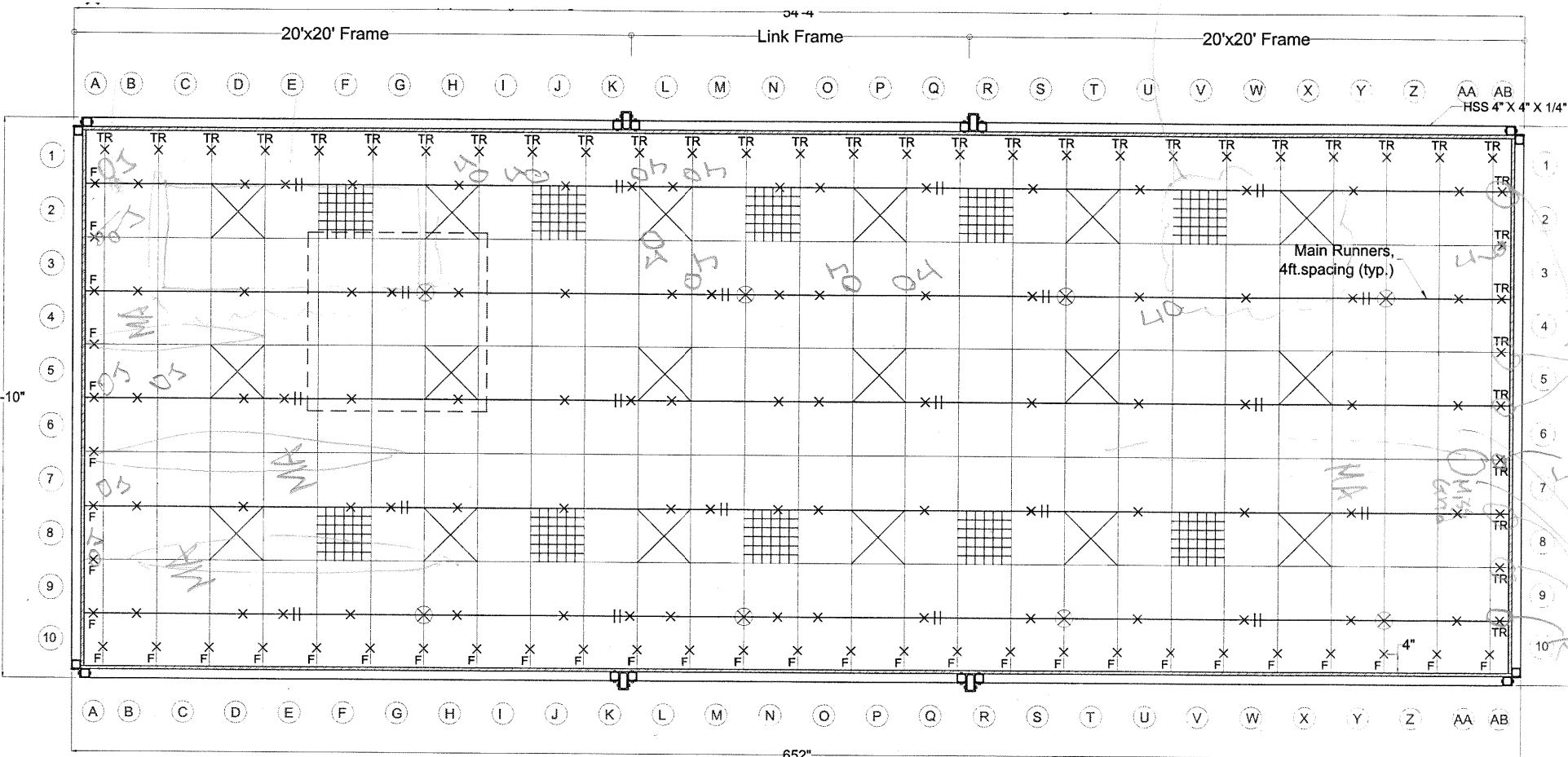
PRODUCED BY AN AUTODESK EDUCATIONAL PRODUCT

TEST END @ 225%

Test Protocol #: NS1108 M25	Sheet #: 4/4
DATE / Time: 4:22 PM	

*Not this collapsed*

*collapsed*



PRODUCED BY AN AUTODESK EDUCATIONAL PRODUCT

PRODUCED BY AN AUTODESK EDUCATIONAL PRODUCT

Free Side Unattached (West & South Sides)  
 (a) Use 2"x2" angle with 3/8" gap (all expect (b))  
 (b) Use 3/8" with clip #5, #8, #10

Suspended ceiling system layout (20'-10" x 54'-4")



PROJECT: Suspended Components Test Prep.	CONTENT: Ceiling System (20' x 50')	DWG. NO: Inspec
BY:	DATE: 09/21/2011	REV. NO.

SCALE: