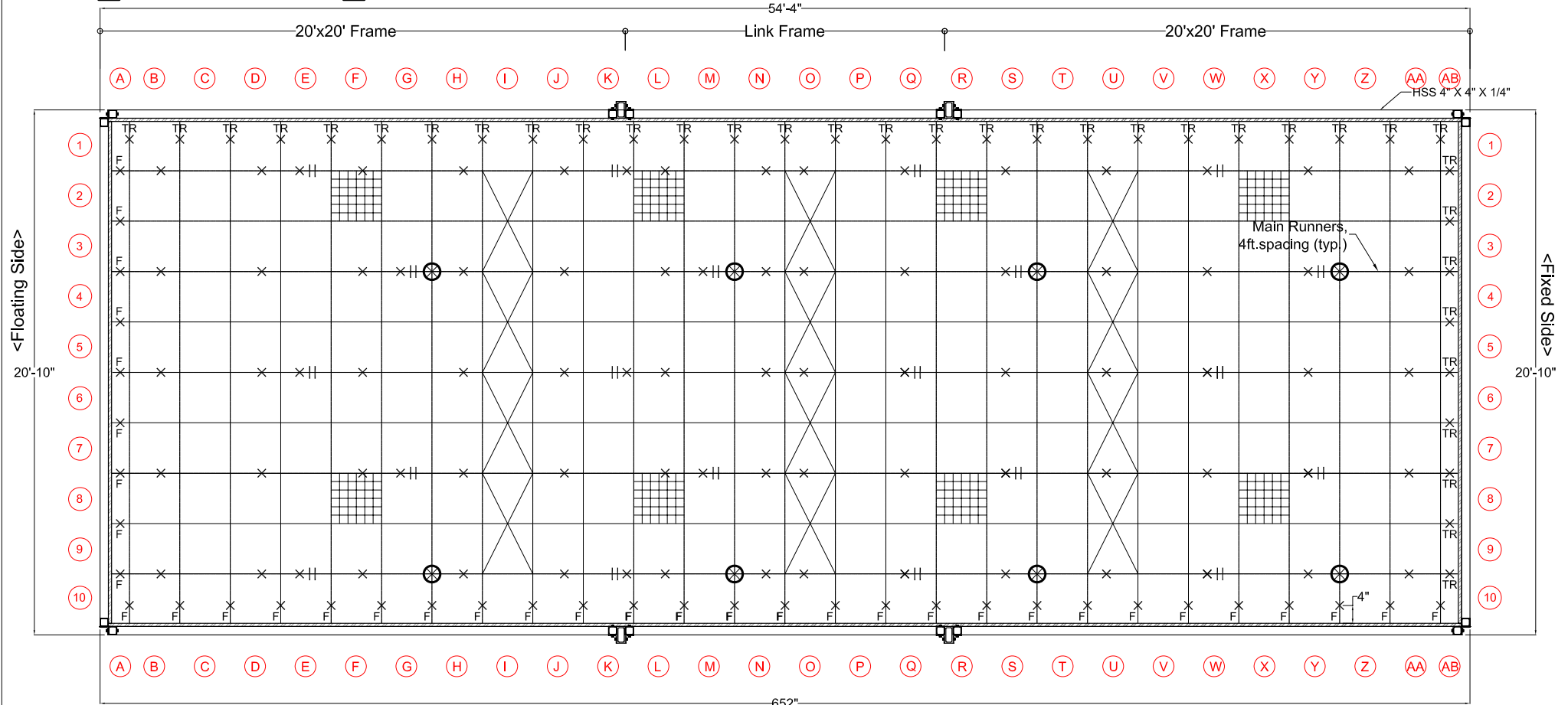


Test Protocol #: NS1108	Sheet #: .
DATE / Time: .	

Legend

-  : 2'x2' Air Diffuser
-  : 2'x2' Lighting Fixture
-  : 2'x4' Lighting Fixture
-  : Splice of Main Runner
-  : Compression Strut
-  : 12 gauge hanger wire
-  : Tight Wall Connection
-  : Floating (free) Connection
-  : Riveted (type 1/8", 0.250)



Free Side Unattached (West & South Sides)
 (a) Use 2"x2" angle with 3/4" gap (all expect (b))
 (b) Use 3/8" with clip #5, #8, #10

Suspended ceiling system layout (20'-10" x 54'-4")



PROJECT: Suspended Components Test Prep.	CONTENT: Ceiling System (20' x 50')	DWG. NO
BY:	DATE: 10/11/2011	REV. NO.
University at Buffalo		SCALE:

Inspe