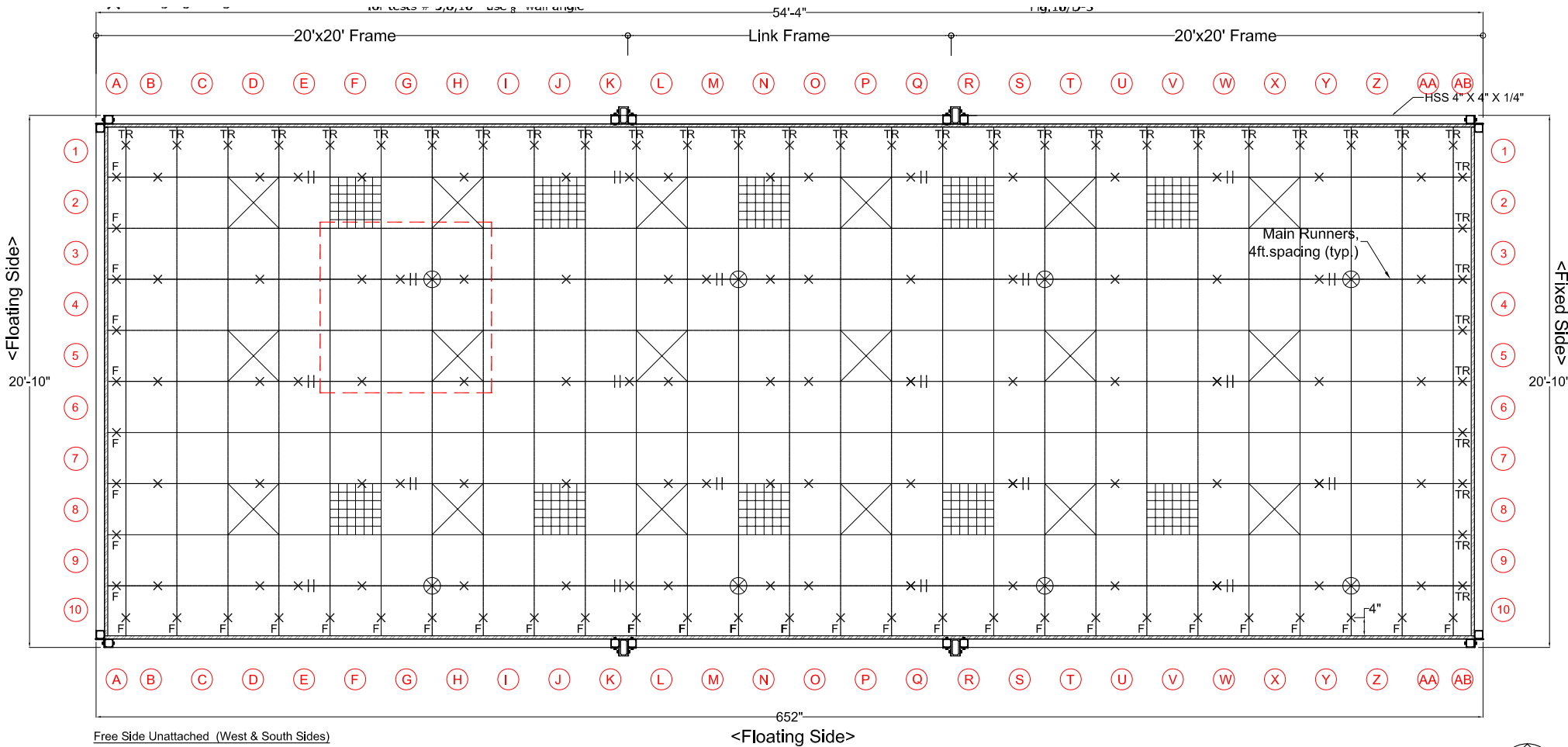


Test Protocol #: NS1108	Sheet #: .
DATE / Time: .	



- Free Side Unattached (West & South Sides)
- (a) Use 2"x2" angle with $\frac{3}{4}$ " gap (all expect (b))
 - (b) Use $\frac{3}{8}$ " with clip #5, #8, #10

Suspended ceiling system layout (20'-10" x 54'-4")



PROJECT: Suspended Components Test Prep.	CONTENT: Ceiling System (20' x 50')	DWG. NO
BY:	DATE: 09/21/2011	REV. NO.
University at Buffalo		SCALE:

Inspection